

Concrete pump – 36 metres

This is a flexible crane with vertical holding (less elbows and excellent sliding characteristics thanks to a narrow package of arms), with TRDI support (support in compact measures, rapid placement and impeccable stability), 160 m³/h pump, compact three-axle chassis, with a range of application of small to medium universal works and works with a limited placement space.

Crane characteristics:

M 36-4 crane	
Model	M 36-4
DN transport tubing	125/5,5
Number of arms	4
Type of folding	Z
Height reach	35,6m
Distance reach	31,7m
Depth reach	23,7m
Height of spread	8,7m
Maximum final length of hose	4m
Forward assistance strength	180kN
Rear assistance strength	185kN

Diagrams of the work of the crane and support for the legs of the machine:

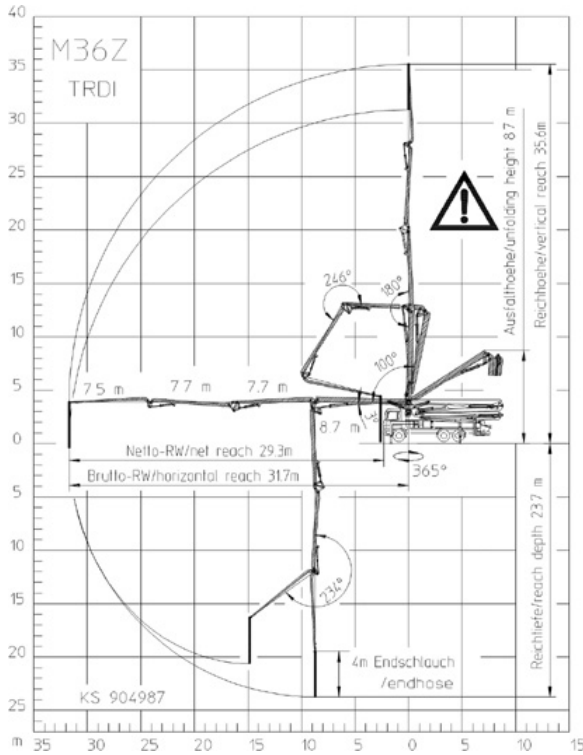


Diagram of the crane

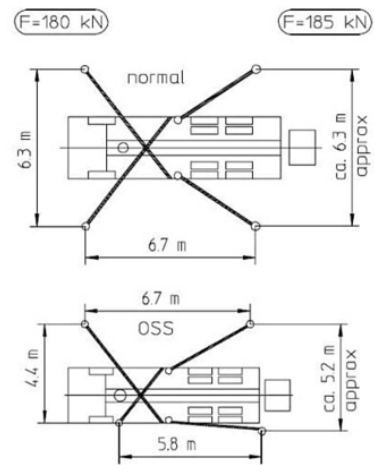


Diagram leg support