

Concrete pump – 46 metres

This is an excellent pump with a great flexibility, great longitudinal reach on the 4-axle chassis and a small support surface, with a flexible five-arm crane with RZ folding. It is flexible, compact and without crane projection, with TRDI support (support in compact measures, rapid placement and impeccable stability), with a pump of up to 160 m³/h and a 4-axle chassis for optimal distribution of cargo, with a range of application of universal works of medium to large size, and works with a limited placement space. Polyvalent machine thanks to the extraordinary flexibility of the crane and the bodywork.

Crane characteristics:

M 46-5 crane	
Model	M 46-5
DN transport tubing	125/5,5
Number of arms	5
Type of folding	RZ
Height reach	45,1m
Distance reach	41,1m
Depth reach	32,2m
Height of spread	9,3m
Maximum final length of hose	4m
Forward assistance strength	260kN
Rear assistance strength	260kN

Diagrams of the work of the crane and support for the legs of the machine:

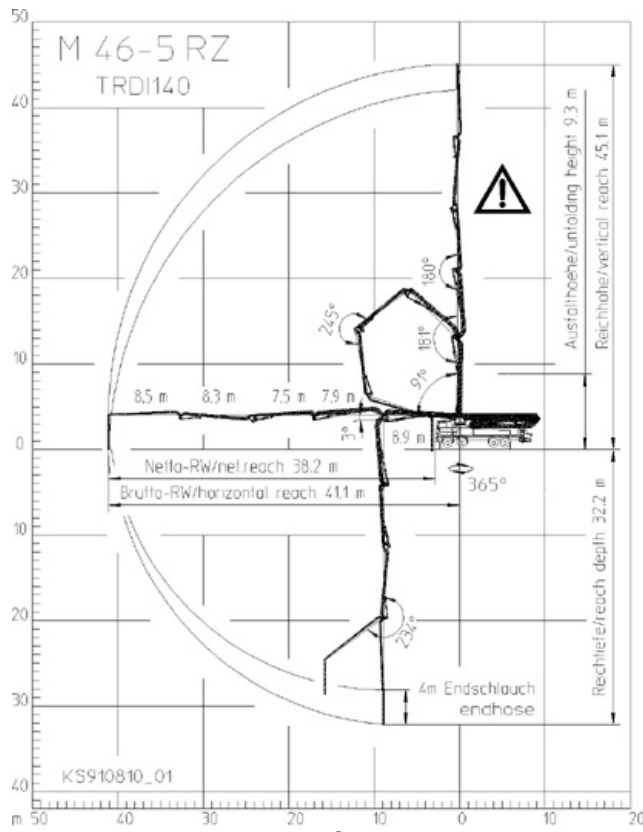


Diagram of the crane

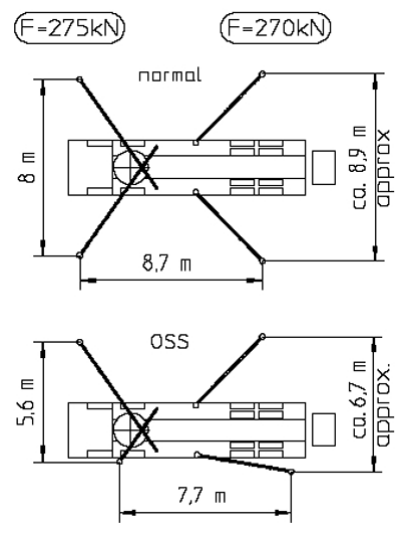


Diagram leg support

Photos:



