


siurell

obra civil  
construction group



specialists in the construction  
of concrete structures

civil works



Our mission is to be the preferred partner for our customers to develop their construction projects, setting a new benchmark for our competitors.

## CONTENT

### Road infrastructure:

- Bridges and tunnels
- Rail and metro lines
- Urban transport stations and parking
- Other elements of road

### Airport Infrastructure

### Hydraulic and maritime works

- Desalination Stations
- Pipes
- Deposits and water supply networks
- Water treatment plants
- Defence of canal banks
- Ports and harbors

### Other works

# Company presentation

Siurell Obra Civil, SL is a company which leads a specialised consortium dedicated to the implementation of concrete structures such as buildings and public works.

The head office is placed in Palma de Mallorca, but its works are carried out throughout Spain and North Africa. Nowadays, the company is working in the Balearic Islands, Catalonia, Basque Country, Madrid, Cantabria, Murcia, Almeria, as well as North Africa and South America.. Due to its experience, security and specialisation, it has achieved some of the most important local and national construction projects.

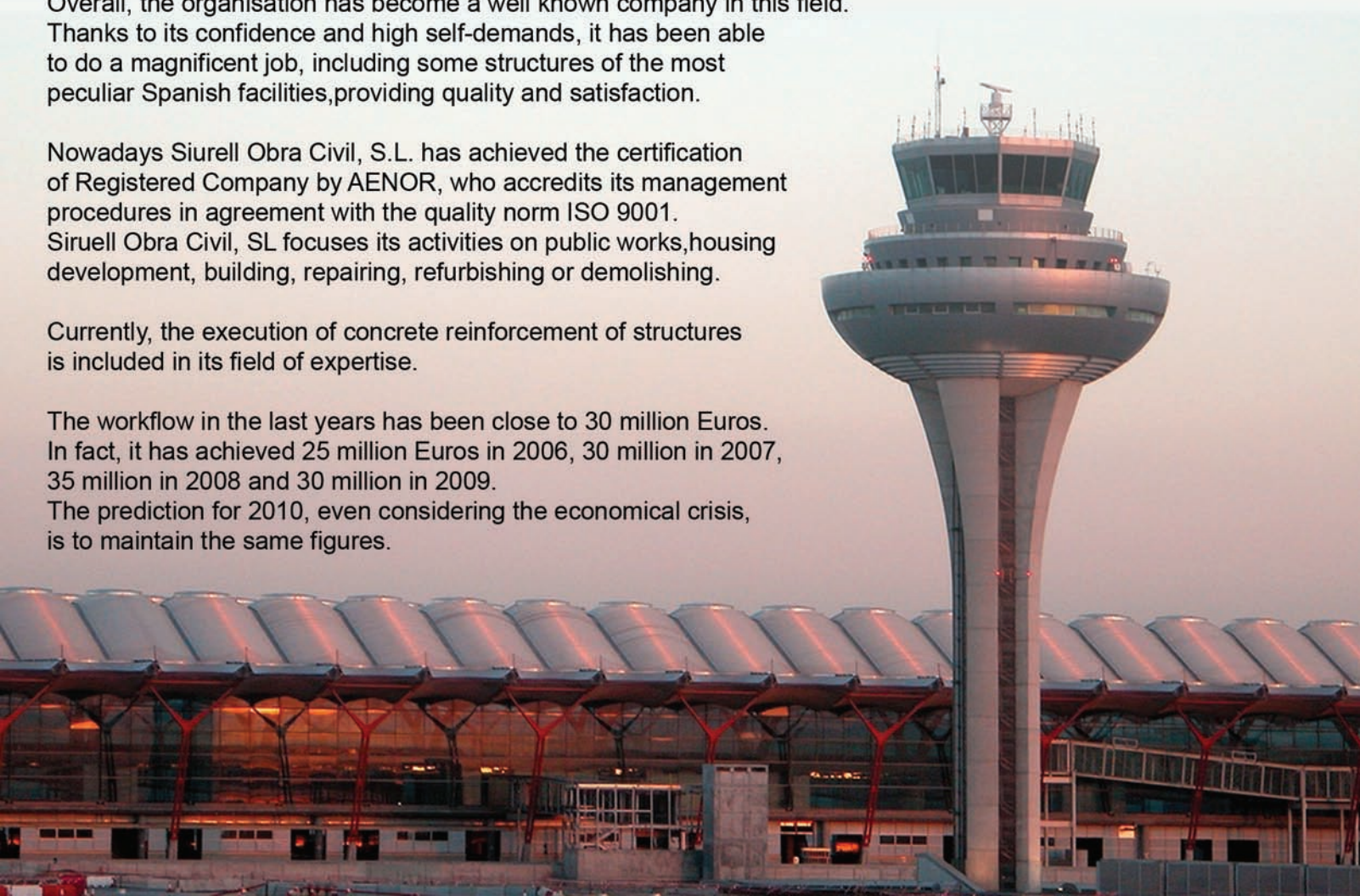
Since its founder started the activity in this area in 1967, the company has developed until it has become one of the main corporations in executing concrete structures. Since the beginning, Siurell Obra Civil has carried out different structures, based on a team of qualified engineers.

Overall, the organisation has become a well known company in this field. Thanks to its confidence and high self-demands, it has been able to do a magnificent job, including some structures of the most peculiar Spanish facilities, providing quality and satisfaction.

Nowadays Siurell Obra Civil, S.L. has achieved the certification of Registered Company by AENOR, who accredits its management procedures in agreement with the quality norm ISO 9001. Siurell Obra Civil, SL focuses its activities on public works, housing development, building, repairing, refurbishing or demolishing.

Currently, the execution of concrete reinforcement of structures is included in its field of expertise.

The workflow in the last years has been close to 30 million Euros. In fact, it has achieved 25 million Euros in 2006, 30 million in 2007, 35 million in 2008 and 30 million in 2009. The prediction for 2010, even considering the economical crisis, is to maintain the same figures.



A tall, cylindrical wooden formwork structure stands at a construction site. The structure is made of vertical wooden planks held together by horizontal metal bands. A red strap is wrapped around the middle. In the background, a truck is loaded with stacks of lumber, and a large pile of earth is visible under a blue sky with some clouds. A yellow horizontal bar is at the top of the image.

# road infrastructure



# road infrastructure bridges and tunnels

The work of expanding the Inca highway with a third lane, has been one of the most important of the Balearic capital developed in recent years. The large influx of traffic and the need to connect the two existing industrial parks in the area, forcing the expansion of the highway with a third lane of 4652 meters in length and execution of a bridge that will allow movement between the two.

Siurell Obra Civil made the bridge structure and various elements of the drainage system of the project.



Bridge between the industrial parks in Palma de Mallorca. Opened in July 2005.





# road infrastructure bridges and tunnels



The splitting of the C-713 road between the towns Inca and Sa Pobla, on the island of Mallorca, has been one of the key road work on the modernization of communications on the island. The work consisted in the realization of 11 km of highway, with three roundabouts, two underpasses and a two-lane road with a width of 3.5 meters in every sense of movement.

Siurell Obra Civil was responsible for the realization of all bridge abutments, pillars and walls of the roundabouts and underpasses.



# road infrastructure bridges and tunnels

The extension of the highway Palmanova to the town of Paguera and the unfolding of the C-719 on the island of Mallorca, has improved safety and avoided the continued retention on the route, which has a traffic more than 30,000 daily vehicles.

The work with implementing a budget of close to 50 million, gave to this four-lane, two in each direction of traffic, four links at different levels, which required the implementation of various elements such as walls, frames, false tunnels and overpasses, all performed by Siurell Obra Civil.





# road infrastructure bridges and tunnels



El Arenal is one of the busiest tourist areas of Mallorca visitors. To improve traffic flow between the area and the town of Lluchmajor, during the years 2003 and 2004 performed the expansion works of the road that joins them.

Siurell Obra Civil was hired to perform all concrete structures, consisting of walls, false tunnels, overpasses and bridges.







# road infrastructure bridges and tunnels

Other works recently carried out by Siurell Obra Civil are, among others, are the access bridge to the Hospital Universitario de Son Espases on the island of Mallorca (see image to the right of this text) and the access to Ibiza Airport (image under the text)

In the case of that bridge, Siurell Obra Civil performed the pillars, concreting board and supports.

As for the work of the entrances to Ibiza Airport, our company carried out the formwork of all walls of underpasses, concreting pillars and boards.

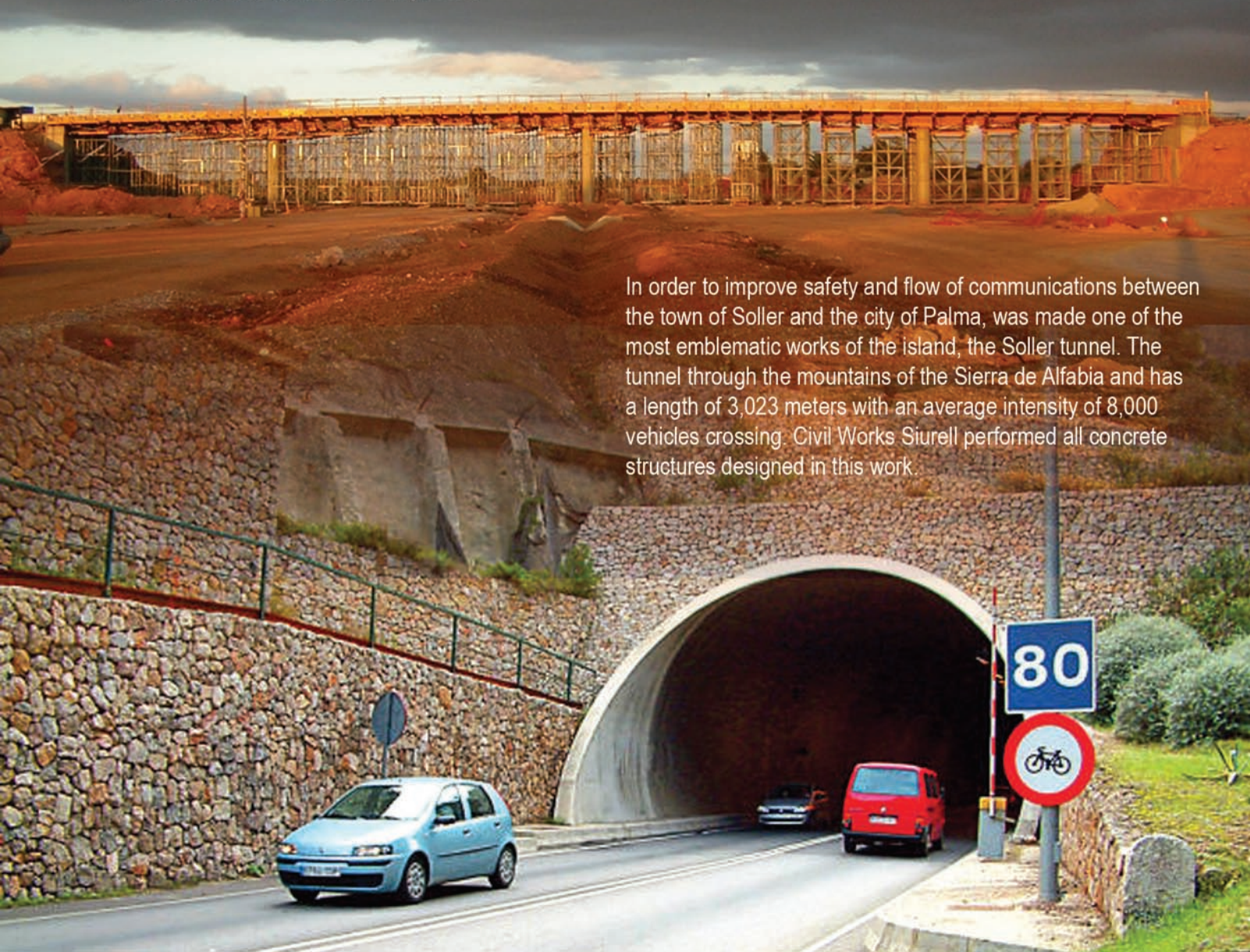




# road infrastructure bridges and tunnels

After the widening of the road of Lluchmajor, several works had to be done to connect this population with rural communities which were isolated by passage of the new highway. The main work was the variation of Cala Pi, which links the town with such cores across the bridge whose structure was performed by Siurell Obra Civil.

The variant was launched in May 2005.



In order to improve safety and flow of communications between the town of Soller and the city of Palma, was made one of the most emblematic works of the island, the Soller tunnel. The tunnel through the mountains of the Sierra de Alfabiá and has a length of 3,023 meters with an average intensity of 8,000 vehicles crossing. Civil Works Siurell performed all concrete structures designed in this work.

# other concrete structures

As part of the overall construction activities developed Siurell Obra Civil has the equipment and expertise to carry out various concrete elements, such as ditch and curb new jersey, with different typologies.

Works of this type in which it has intervened Siurell Obra Civil:

- Carretera de Valldemossa (Mallorca). Making gutter and new jersey.
- Access to the airport of Ibiza. Gutter and new jersey.
- Motorway Palma-Andratx (Mallorca). Curb and new jersey.
- Variant of Inca (Mallorca). Ditch.
- Road Lluchmajor (Mallorca). Ditch.





# road infrastructure subway and railroad



The construction of the subway line in Palma de Mallorca, has provided a modern urban transport infrastructure that facilitates communication between the city and its suburbs, reaching the Balearic Islands University. The execution of the work was divided into four parts, independently adjudicated, involving a total of 8 underground stations, a station outside a tunnel of 4.2 km and 7.2 km of track.

The work culminated in a period of less than 48 months, having participated Siurell Civil Works in all its phases as the main company specializing in concrete structure.

Above and left, building the tunnel in the section II of the works.



# road infrastructure subway and railroad

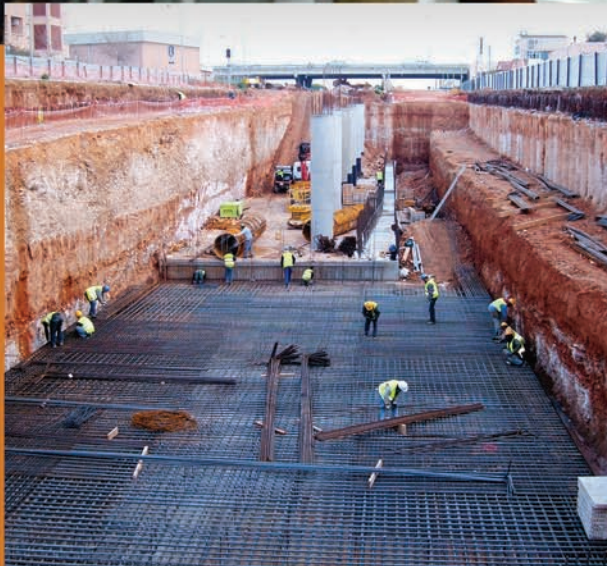
The section I of the subway in Palma de Mallorca include the construction of the Son Fuster Vell station, which together with the stations of the Gran Via Asima and Son Castello are the three stops of this transport in the main industrial area of the city.

For the construction of this tunnel, civil works Siurell Obra Civil used a modular formwork carriages, allowing to built the walls more quickly and safely.





# road infrastructure subway and railroad



Of the 8 stations built, the nearest to the city, apart from the main station is the Jacinto Verdaguer station. Its location is one of the most popular together with the University.

It has four tracks and two platforms. Of these four tracks, two are used by the subway Palma, which opened in February 2007. The other two are used by the railway company of Mallorca in the lines around the island.

This station together with the Son Oliva station, form the so-called "rail corridor", a project of burial of 2.5 km, and fully executed.



# road infrastructure subway and railroad



The recovery of the former railway line Manacor to Arta, 32 kilometers, is the protection of a rich and valuable patrimonio of the island of Mallorca.

Siurell Civil Works has done most of the concrete elements and structures, with plans to conduct more than 80 actions, such as drainage, retaining walls, concrete superstructure of rails, restoration and expansion of the three stations as well as three existing tunnels. Its opening is planned for 2013.



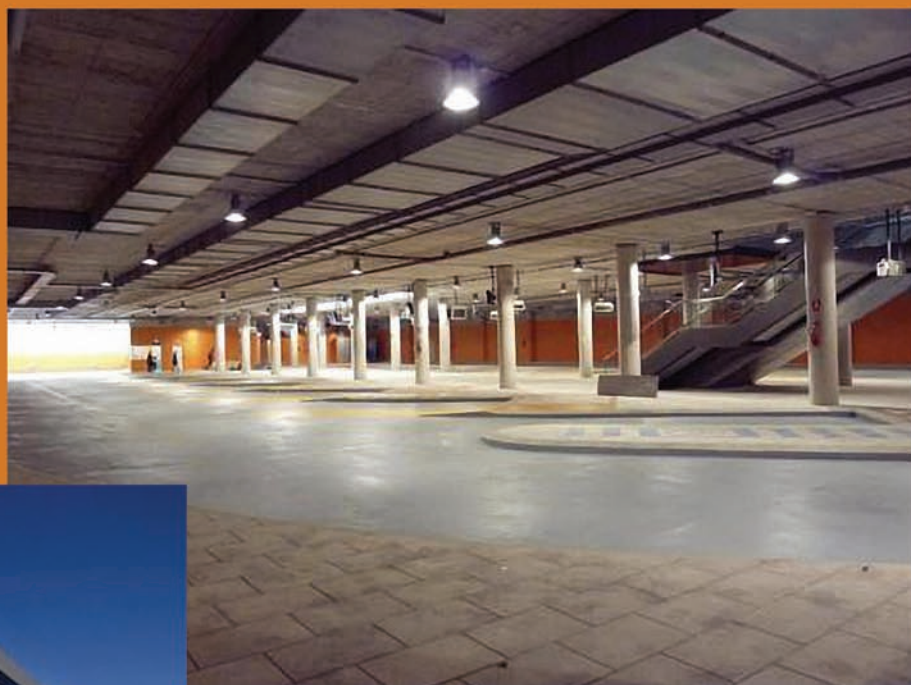


# road infrastructure parkings and stations

CTIS station located in the city of Ibiza, located in the new round interurban, 300 meters from the center of the city, is the ideal nexus for all existing bus routes on the island.

This modern station also has taxi stops, 24-hour parking, luggage check-parcel, car hire and information service.

The execution of its concrete structure was entrusted to Siurell Obra Civil for the prime contractor for the work.







# road infrastructure parkings and stations

On April 25, 2007 was opened to the public the subway in Palma de Mallorca. The line part of the Intermodal Station in Plaza of Spain, where it connects with the commuter trains and different intercity bus lines. It is the most important urban transport infrastructure made by Siurell Obra Civi, mainly due to the dimensions of the elements that shape and construction techniques used. In the picture on the top of the page can be seen inside the station.



In the photos left and below the text, construction of the Intermodal Station in Palma de Mallorca. The station runs on 2 basement floors, being the first one destined to the passenger terminal. On the second basement floor are located the subway platforms and the bus parking area.

As highlights, include armed slab thickness of 140 inches and the roof slab of 80 centimeters, formwork by the table system.






# road infrastructure

Road infrastructure works in which Siurell Obra Civil has participated:

- Third Rail Palma-Inca road. Majorca
- Highway Inca-Sa Pobla. Majorca
- Renovation of the Plaza de Oriente and underpass. Madrid
- New road M-224 in Alameda Towers. Madrid
- Underpass in Rios Rosas street. Madrid
- Extension of the road C-58 Badia-Sabadell. Catalonia
- Ronda West in Sabadell.
- Motorway Palmanova-Paguera. Majorca
- Doubling of the road of Palma-Lluchmajor. Majorca
- Northern Alternative Ibiza
- Access to the airport of Ibiza.
- Tunnel of Bendinat. Majorca
- Soller tunnel. Majorca
- Bridge of Ferrerias. Menorca.
- Bridge of Cala Pi variant in Lluchmajor. Majorca
- Access Bridge to Hospital Son Espases. Majorca
- Tunnel of Gualaca. Chiriqui. Panama
- Intermodal Transfer Center (CTIS). Ibiza
- Intermodal Station of Palma de Mallorca
- Parking at the Hospital Arnau de Vilanova. Catalonia
- Underground parking in Moncloa. Madrid
- Underground parking of Our Lady of Remembrance. Madrid.
- Underground parking on the street General Riera. Majorca

- 
- Concrete foundation of Panama City subway
  - Underground subway Palma de Mallorca
  - Underground parking on Avenida Antonio Maura. Majorca
  - Annaba-Skilda railway line. Algeria
  - Manacor railway-Arta. Majorca



airport  
infrastructure





# airports

When the quality and timeliness are the critical aspects of a project, Siurell Obra Civil has earned the confidence of the leading construction companies.

This trust has been renewed in recent years with the implementation of additional projects.

The airport facilities are an excellent example

T4 Terminal of the Barajas Airport. Madrid



Satellite Building. Barajas Airport. Madrid



Parking and walkway from the terminal.. Palma de Mallorca Airport





# airports

Fast download deposit in  
Alguaire Airport.  
Catalonia.



The Siurell Obra Civil operational capacity is constantly reinforced with the support from the member companies of the business group by providing materials, machinery and vehicles.

The immediate availability of these means makes it possible to offer a complete and effective solution for our clients and the implementation of their projects.

We currently have at our disposal the following machines:

- Pump truck - 36 meters
- Pump truck - 42 meters
- Pump truck - 46 meters
- Several cranes on truck
- Concrete Paver

Prat Airport Parking extension. Barcelona





# airports

Airport works of concrete structure which has been conducted by Siurell Obra Civil:

- Building of Terminal 4 Madrid Airport
- Authorities Pavilion. Madrid Airport
- Expansion of El Prat Airport Parking. Barcelona
- Expansion of the terminal building at Ibiza Airport
- Satellite Building at Madrid Airport
- A platform opposite to the new terminal building at Palma Airport
- Airport Madrid-South. Ciudad Real
- Reus Airport. Tarragona
- Alguaire Airport Terminal. Girona.
- New Airport Terminal Mahon. Minorca



Parking extension of Prat Airport, Barcelona



New Terminal of Mahon Airport. Minorca

An aerial photograph of a wastewater treatment plant. In the foreground, there are two large circular clarifiers with metal walkways and railings. The walkways have ladders leading down into the water. The clarifiers are surrounded by a gravel-covered area. In the background, there is a large body of water, possibly a reservoir or a bay, with a town visible on a hill in the distance under a clear blue sky. A yellow horizontal bar is positioned above the text.

# hydraulic and maritime works



# Hydraulic and maritime works desalination stations

In the city of Tenes, on the Mediterranean coast 200 km from Algiers, Siurell Obra Civil has undertaken the construction of the structure of a station desalination of seawater. With a treatment capacity of 200,000 cubic meters daily, along with part of Skikda and Honaine stations, a large infrastructure whose design, financing, construction and operation have been awarded to the Spanish technology firm Befesa.



Siurell Civil Works currently has a branch in Algeria, with several projects already implemented in recent years. Another example of this type of work, carried out by our company, is the desalination station Vila, Ibiza.

Total investment by the contractor is 231 million dollars.







# Hydraulic and maritime works

# pipes



Works of sanitation infrastructure in the industrial area Ses Veles.



sanitation infrastructure in the industrial park of Ses Veles, in Majorca.

In the section of pipeline infrastructure Siurell Obra Civil has participated in various activities, examples include the water collector of Palma subway or performance of urbanization and

Works of water collector of Palma subway.





# Hydraulic and maritime works deposits



With an initial budget of 8.9 million euros, the Ministry of Environment and Rural and Marine Affairs in January 2009 awarded the works for the expansion of existing infrastructure in Ibiza for the supply of desalinated water from the desalination plant in Santa Eulalia to several towns.

Siurell Obra Civil has been contracted to carry out the structures of supply depots, 6 in total, with a capacity greater than 20,000 cubic meters.





# Hydraulic and maritime works deposits



Among the different actions carried out for the use of water from the Sierra de Tramontana on the island of Mallorca, the deposit in the town of Sóller is probably the most important work. Siurell Obra Civil has made the concrete structure of the pumping station and this deposit that is supplied with the flow of water from Sa Font des Verger (Sa Costera) and water excess of the Torrent Major..





# Hydraulic and maritime works water treatment plants

In order to provide to the city of Palma de Mallorca of a appropriate sanitation infrastructure to the needs of the population, in 2002 started the works for the expansion and modernization of the EDAR 1.

After four years of work was opened, with a capacity of 50,000 cubic meters of wastewater treatment.

Siurell Obra Civil performed concrete structures of the various buildings and settling ponds, biological reactor, deposits, sludge treatment and tertiary treatment, digesters, control buildings and an auditorium.





# Hydraulic and maritime works water treatment plants



Ibiur water treatment station in the town of Ikaztegieta, supplies drinking water to 18 populations of the province of Guipuzcoa. This plant is part of Ibiur system, which includes the dam, network of pipes and tanks, sewers and sewage treatment plants.

With a total budget exceeding 19 million euros, Siurell Obra Civil was hired by DRACE for the realization of concrete structures.



# Hydraulic and maritime works defence of canal banks



Siurell Civil Works has also made various channels refurbishment works and defend margins of streams and canals.

Highlight the work carried out during the unfolding of access to Palma by the Way of Jesus, replacing the existing masonry structure at the junction with the stream of Sa Riera (photo to the left of this text), and improving the channel of the Torrente Son Guillen, in the town of Andratx (Mallorca)





# Hydraulic and maritime works ports and harbors

Building MINR in Port Adriano (Mallorca) . .



Botafoc new dock on the island of Ibiza.



Of the various projects of this kind in which he has intervened, Siurell Obra Civil, highlights new Botafoc dock in Ibiza. This is a vertical typology dock 516 meters long. It is composed of 15 large concrete boxes of different sizes and with a weight ranging between 4,000 and 12,000 tons, seated on a bench submerged breakwater.

It has an access road suitable for vehicular traffic, formed in the main section by a causeway of 7.5 meters. On both sides of the tracks are arranged like a stroll sidewalks, bike lane with 2.5 meter wide.



# Hydraulic and maritime works

Hydraulic and maritime works in which he has intervened Siurell Obra Civil:

- Water treatment plant Ikaztegieta drinking. Guipuzcoa
- Implementation of joint manholes of water pipe system in Tleta Souk. Algeria
- Santa Ponsa treatment station. Majorca
- Extended Lluchmajor treatment plant. Majorca
- You have desalination station. Algeria
- Desalination in the city of Ibiza.
- Deposit of Sa Costera in Soller. Majorca
- Conditioning of the bed and banks of the Torrente de Son Guillen Andratx. Mallorca.
- Subway Collector Palma de Mallorca.
- Construction of the structure for the splitting of the Way of Jesus at its intersection with the river of Sa Riera. Majorca
- Pipes and drainage infrastructure of the industrial Ses Veles. Mallorca.
- Draft water supply network from the desalination station Tleta Souk. Running the set of boxes. Algeria.
- Deposits of infrastructure "Arteries in Ibiza"
- New dock Botafoc. Ibiza
- Paving the old dock in Palma de Mallorca
- MINR Building in Port Adriano. Majorca
- Marina in Sant Adria de Besos. Various structures. Catalonia
- Heel RO-RO port of Ibiza.







other works



# other works

The seafont of Palma de Mallorca is a project to give this city a green area of 40,000 square meters, which will provide citizens an area with walkways, gazebos, socio-cultural facilities, sporting and administrative and others.

Siurell Civil Works has been contracted to carry out the structure of the underground facilities as well as other structures belonging to the set.





# other works



The Data Processing Centre of the Bank of Santander in Cantabria is constituted by a set of buildings seismic resistance. This building is designed to occur any natural disaster or power failure. With over six thousand square meters is designed to take future expansion of the company in the coming years.

Above and left of the text, construction of the basement floor of the south CPD and communications tower.

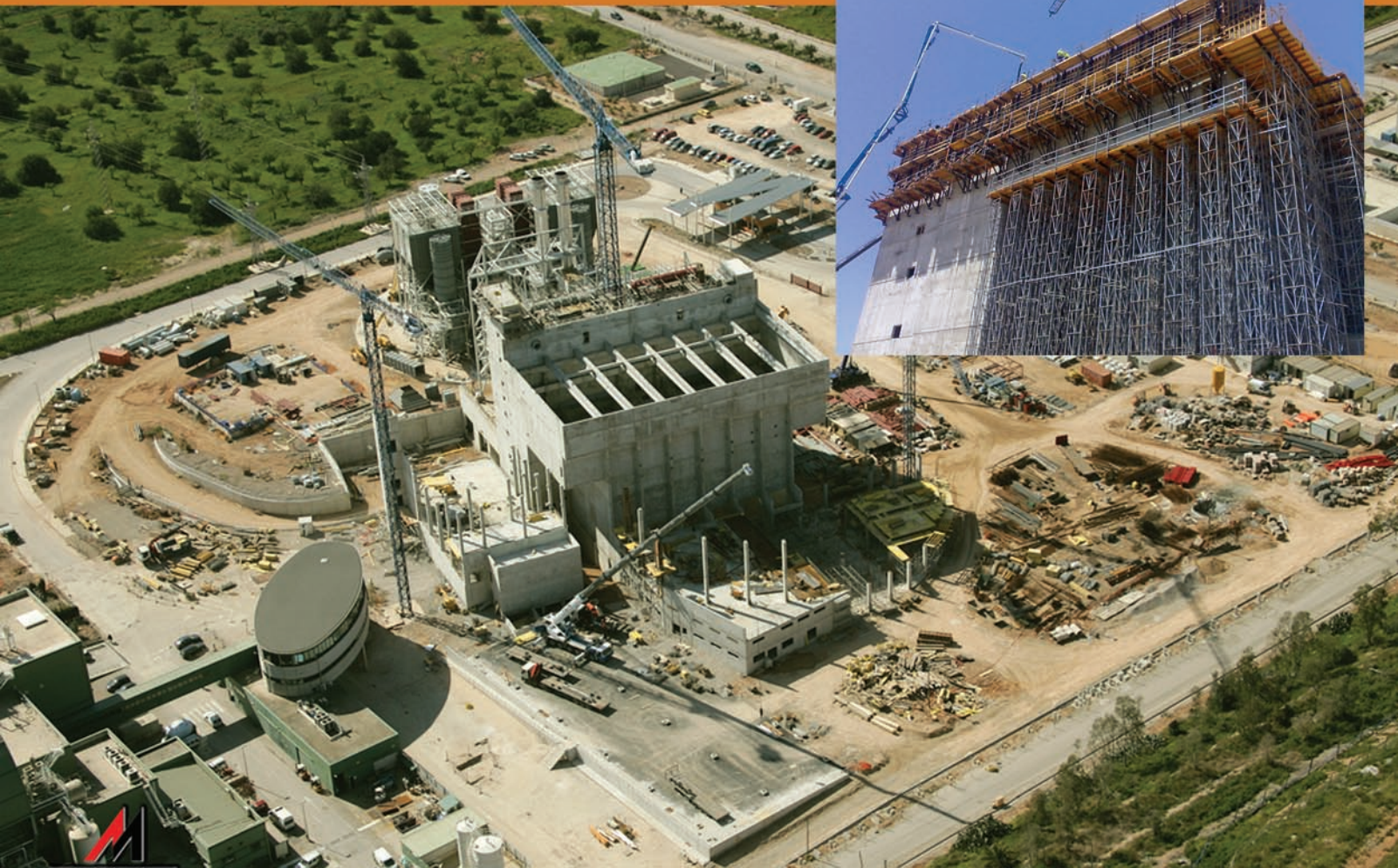


# other works

Structure with a budget of more than 4.5 million euros, Siurell Obra Civil carried out the construction of the structure of the plant expansion and recovery of waste energy in Son Reus, Palma de Mallorca. With a staff of 140 formwork, which worked in shifts 24 hours a day, the work was executed within 18 months.

The work done by Siurell Obra Civil included the implementation of the structure of the buildings that comprise the recycling plant, slag, machining, packaging, composting, offices, drums and the construction of an elevated monorail to 7 meters high that runs part of such plant, with a length of 1.200 meters.

For its construction were used climbing formwork and formwork systems ULMA and PERI.





# other works

Two other examples of emblematic works which he has participated in Siurell Obra Civil would be the new fire station in Palma de Mallorca and green infrastructure in the area called Parque de Sa Riera.

Both works were executed during the years 2007 and 2009.

Sa Riera Park is part of the so-called "Green Wedge" of Palma and covers a total area of 120,000 square meters. Siurell Obra Civil made structures urbanization and open-air auditorium.

Meanwhile the new fire station is a modern facility with a budget for the phase structure of 675,000 euros.





# main customers



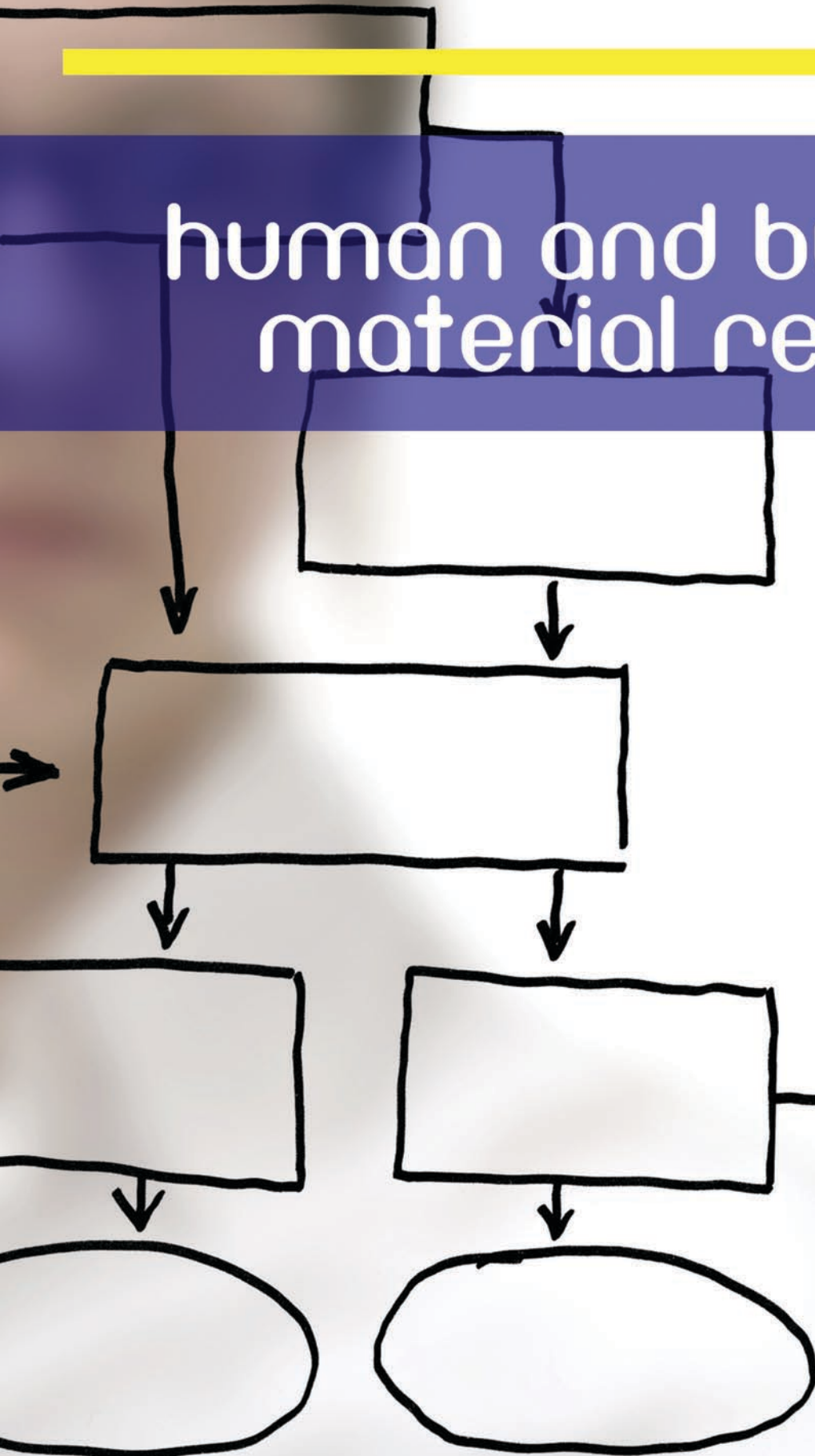
# main customers

Since the beginning, Siurell Obra Civil has had the purpose to earn its client's trust by achieving targets, offering personalised services and reaching its client's expectations. Furthermore, Siurell Obra Civil works hard to be the best one in its field.

Today, after more than 40 years since its creator formed the company, we can indicate that these values have been the key to the company's success, which can also be valued by the number of clients that rely on Siurell Obra Civil and the standing name the company has achieved.



# human and building material resources





# human and building resources



Since its establishment, Siurell Obra Civil has collaborated in the implementation of a variety of structures. In order to achieve success in this kind of projects, the company relies on a team of qualified technicians with experience and proven results. In other words, a well-chosen organisation has made possible to become the prestigious company it is today.

Today, Siurell Obra Civil has offices in Madrid, Barcelona and the Balearics.

Through its subsidiaries companies overseas, Siurell Obra Civil has a permanent presence in Algeria, Panama and Peru. At the moment the company is expanding in South America.

As a leading business group in the construction industry, Siurell Obra Civil is able to adjust the staff depending on each project's needs.

At the moment, Siurell Obra Civil has a team of professionals such Civil Engineers, Technical Engineers, Technical Architects, Foremen, Health and Safety Technicians, Quality and Environmental Technicians and a administrative staff with HR Managers, economists and clerks

The material resources are provided by a group companies specialised in construction machinery and equipment, providing formwork systems, items such as trucks, fire trucks, concrete pavers and other machinery necessary for the development of their business.



quality, safety and  
environment

# quality, safety and environment

The constant improvement as one of the company's policy has promoted the implementation of their quality management and environmental systems. It is currently certified by AENOR as it meets the requirements of ISO 9001:2008 and ISO 14001:2004.

Moreover, another priority for Siurell Obra Civil is to have full safety conditions for all the staff during the development of each project. This is important in order to preserve and respect the health and life of its workers.

This commitment to health at work is responsible for the creation of its own Risk Prevention Department and also the constant training of its managers and employees, obtaining a high compromise with the existing obligations of the Health and Safety regulations. This aspect is an added value provided by Siurell Obra Civil to its customers.



# offices and contacts

## Branch offices:

### Madrid:

Polígono Industrial LA MATA  
Camino Pradovera 18  
28440 – Guadarrama  
MADRID  
Telephone: +34 91 854 36 31  
Fax: + 34 91 854 29 33

Ricardo García Pérez  
ricardo@siurelloc.com  
Mobile: 606 55 67 69

### Catalonia:

C/Gran Vía, 35, local 2  
08908 – Hospitalet de Llobregat  
Barcelona  
Telephone: +34 93 331 95 07  
Fax: + 34 93 296 61 54

Yago Ruiz Tintoré  
yago@siurelloc.com  
Mobile: 626 388 123

### Balearic Islands:

Cami Son Fangos, 100, Office 6ª  
07007 – Palma de Mallorca  
Balears  
Telephone: +34 971 40 86 35  
Fax: +34 971 40 86 11

Antonia Oliver Jaume  
antonia@siurelloc.com  
Mobile: 635 61 81 87

### Panama:

Av. Ricardo J. Alfaro  
The Century Tower Building  
Office 511  
Telephones:  
(+507) 260 8309  
(+507) 260 9377

Sancho Alvaro Alemán  
sancho@siurelloc.com  
Mobile: (+507) 66198422

### Peru:

C/Las dalias 113, office 401.  
Miraflores, Lima, Perú.  
Telephone: (+511) 979 59 80 96  
Rpm: 979 59 80 96  
Nextel: 622\*1578

Darío Berna Forniés  
dario.berna@siurelloc.com

### Algeria:

33 Ave Robespierre  
Oran- Algeria

Diego Jerónimo González  
diego@siurelloc.com  
Mobile: +34 669857788

### Website:

[www.siurelloc.com](http://www.siurelloc.com)

